



UTZON • COLOR PALETTE • PS 2027

## SHEARLING



Material: Laconet Teddy

Color: Milk/White

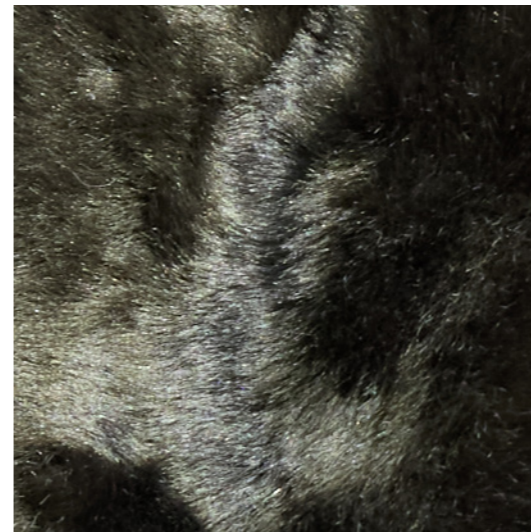
Code: KF-0276



Material: Toscana

Color: Milk

Code: KF-0282



Material: Lacon

Color: Cipres

Code: KF-0273



Material: Lacon Tippex Curly

Color: Lead/White

Code: KF-0275

## SUEDE



Material: Lux Suede

Color: Desert

Code: KF-0271



Material: Suede

Color: Clay

Code: KF-0265

## FEATHER PLONGE LAMB



Material: Feather Plonge Lamb

Color: Milk

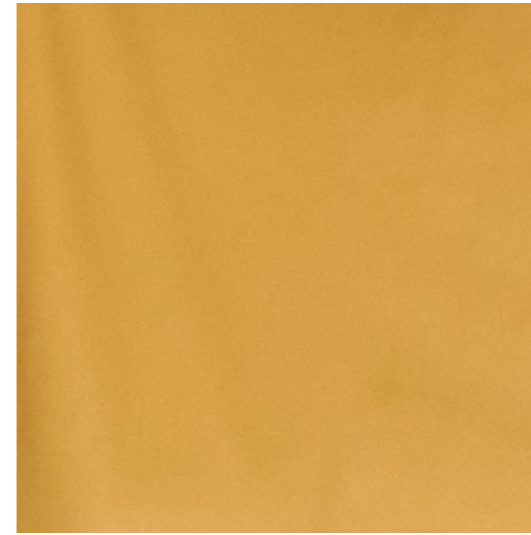
Code: KF-0268



Material: Feather Plonge Lamb

Color: Desert

Code: KF-0270



Material: Feather Plonge Lamb

Color: Corn

Code: KF-0269

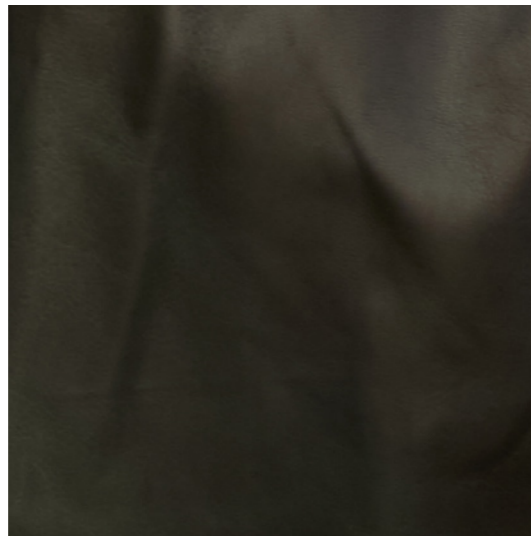


Material: Feather Plonge Lamb

Color: Black

Code: KF-0067

NAPPA PAIS

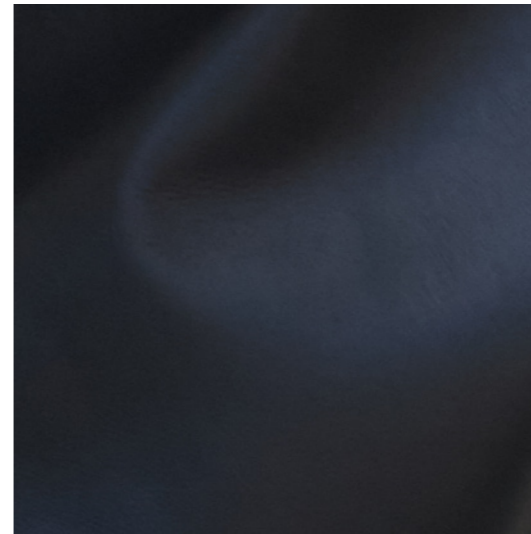


Material: Nappa Pais

Color: Cipres

Code: KF-0274

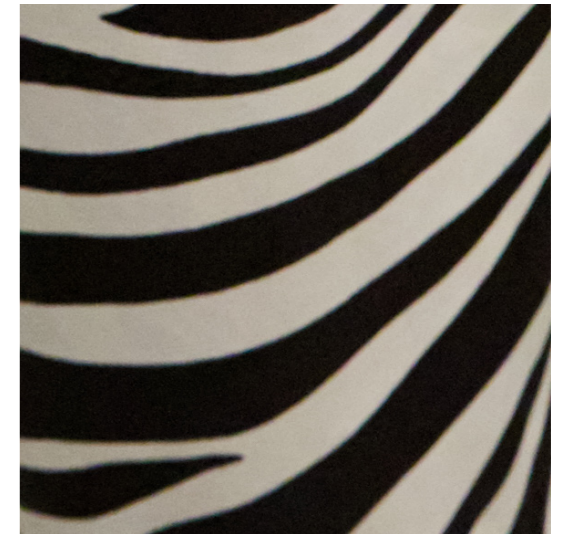
LAMB SKIN



Material: Lamb Skin

Color: Savanna Noir

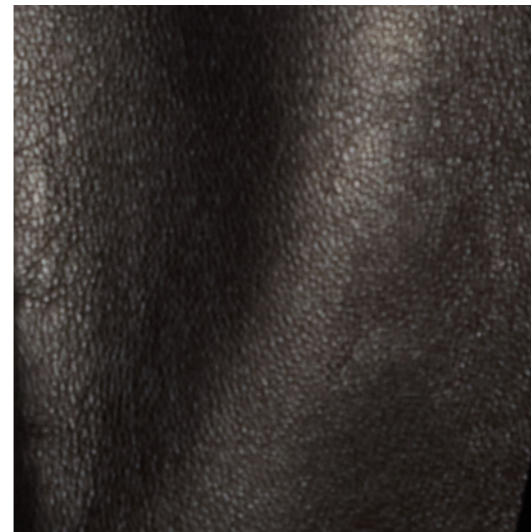
Code: KF-0266



Material: Lamb Skin

Color: Zebra Print

Code: KF-0267



Material: Lamb Skin

Color: Burnt Savanna

Code: KF-0263

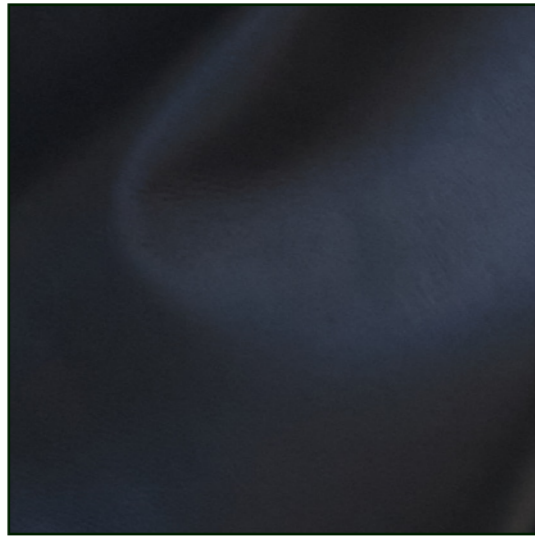


Material: Lamb Skin

Color: Olive

Code: KF-0264

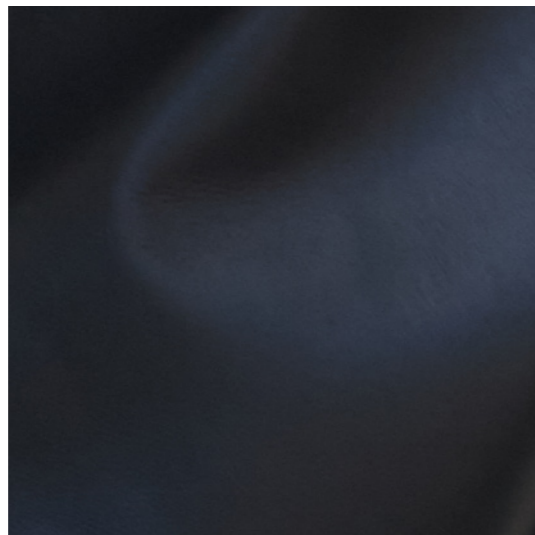
LAMB NAPPA DRAGON



Material: Lamb Nappa Dragon 0,3-0,4 mm

Color: Black

Code: KF-0136



Material: Lamb Nappa Dragon 0,5 - 0,6mm

Color: Black

Code: KF-0001

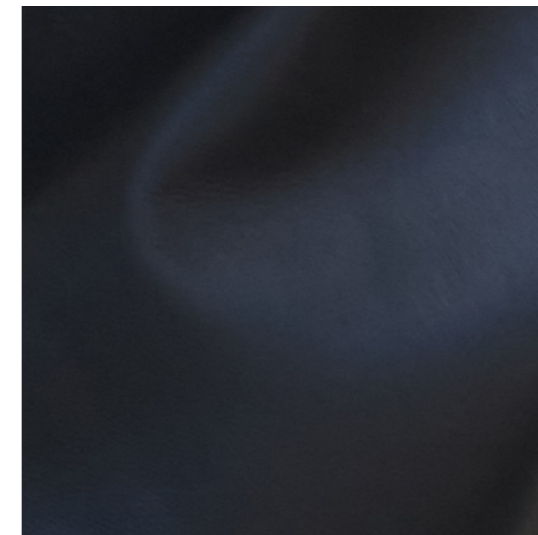
ELA LAMB



Material: Ela Lamb

Color: Salt

Code: KF-0003



Material: Ela Lamb

Color: Black

Code: KF-0020

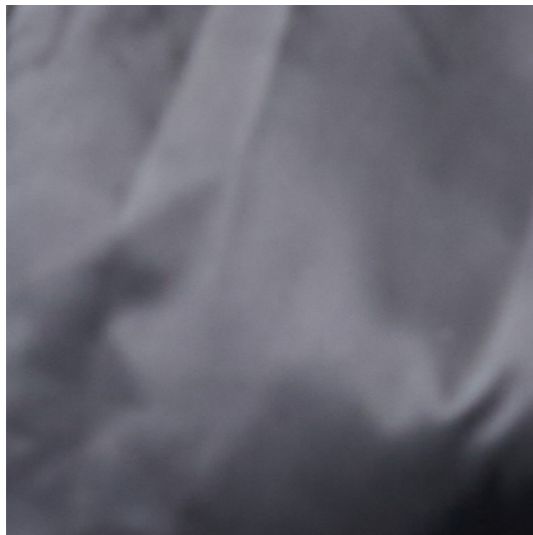
NYLON



Material: Nylon  
Color: Desert  
Code: KF-0272



Material: Nylon  
Color: Beige  
Code: KF-0278



Material: Nylon  
Color: Black  
Code: KF-0277

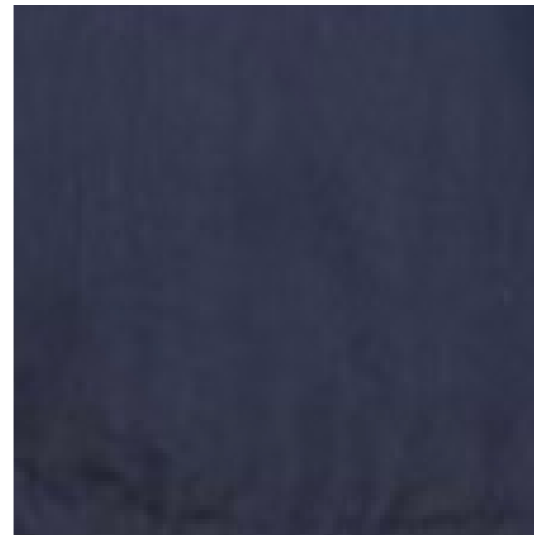
PIMA COTTON



Material: 100% Pima Cotton 18gsm  
Color: Bright White  
Code: KF-0124



Material: 100% Pima Cotton 18gsm  
Color: Clay  
Code: KF-0279



Material: 100% Pima Cotton 18gsm  
Color: Midnight  
Code: KF-0280

WASHED COTTON



Material: 100% Washed Cotton 300gsm

Color: Washed Sand

Code: KF-0281

# UTZON

PHILOSOPHY

The nature is unique. It never produce the same thing twice.

All of our styles are made of skin in the highest quality and each piece is handmade under proper conditions to ensure a premium product.

Sustainability and social responsibility is a naturally integrated part of our worldview.

All skins are locally sourced by our suppliers and are 100% by-products of the food industry to ensure nothing goes to waste.

Our skins are biodegradable in nature.

We redefine natural skins with an informal approach of elegance and we see ourselves as refining what nature has already designed so beautifully.

Paris

**Anoushka Mac-Crohon**

anoushka.gm@gmail.com

International

New York

**VESPR**

Erin Sayer • ezs@vesprnyc.com

USA & Canada

Milano

**2PM feeling**

Matteo Falcone • Pablo Frutos Perez

matteo@2pmfeeling.com • pablo@2pmfeeling.com

Italy

Munich

**Studio Pezzetta**

Caroline Pezzetta • Cristina Micheletti

caro@studiopezzetta.com • cristina@studiopezzetta.com

Germany, Switzerland & Austria

Oslo

**Holtex AS**

Line Holte • line@holtex.no

Norway

Copenhagen

**UTZON A/S**

Pernille Utzon • sales@utzoncph.com

Denmark

UTZON

P S 2 0 2 7

